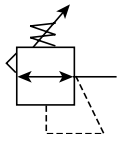
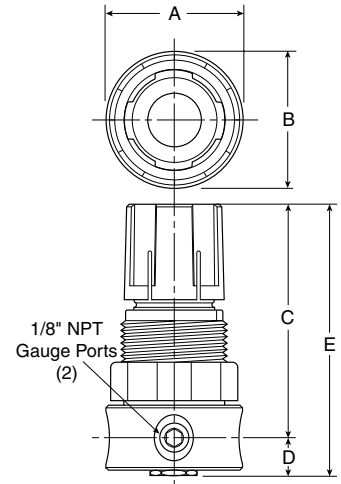


**20R Regulators – Miniature (Water Service)**



**Features**

- Rugged brass body for water service.
- Unbalanced poppet standard.
- Diaphragm operated for fast response.
- Non-rising adjusting knob.
- Compact, 3.06 inch (77.79mm) high by 1.56 inch (36.69mm) wide.
- High Flow: 1.25 GPM



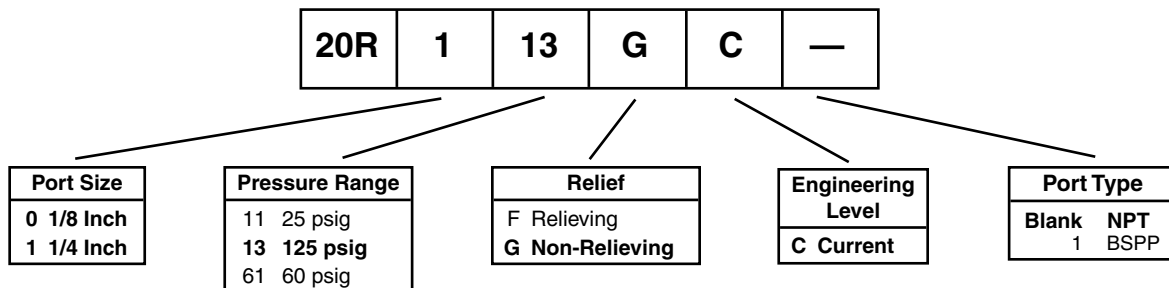
Port Size	NPT
Without Gauge	
1/8"	<b>20R013GC</b>
1/4"	<b>20R113GC</b>

20R Regulator Dimensions		
A	B	C
1.56 (40)	1.56 (40)	2.56 (65)
D	E	
0.50 (13)	3.06 (78)	

**Bold Items are Most Popular.**  
 For other models refer to ordering information below.  
 NOTE: 1.25 Dia. (32mm) hole required for panel mounting.

Inches (mm)

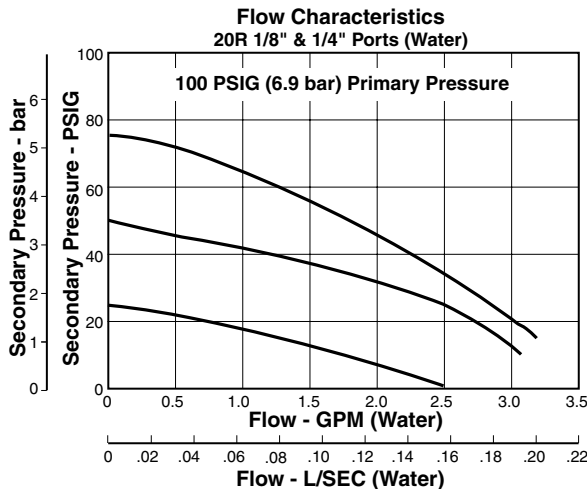
**Ordering Information**



**BOLD ITEMS ARE MOST POPULAR.**



**Technical Information**



**CAUTION:**

**REGULATOR PRESSURE ADJUSTMENT** – The working range of knob adjustment is designed to permit outlet pressures within their full range. Pressure adjustment beyond this range is also possible because the knob is not a limiting device. This is a common characteristic of most industrial regulators, and limiting devices may be obtained only by special design.

For best performance, regulated pressure should always be set by increasing the pressure up to the desired setting.

<b>⚠ WARNING</b>
<b>Product rupture can cause serious injury. Do not connect regulator to bottled gas. Do not exceed maximum primary pressure rating.</b>

**20R Regulator Kits & Accessories**

- Bonnet Kit .....PCKR364Y
- Bonnet Tamperproof Kit .....PCKR364T
- Panel Mount Nut – Aluminum .....R05X51-A  
 Plastic .....R05X51-P
- Mounting Bracket Kit .....SA161X57
- Repair Kits – Relieving.....PRKR164Y  
 Non-Relieving.....PRKR163Y

**Specifications**

- Gauge Ports (2) ..... 1/8 Inch
- Port Threads ..... 1/8, 1/4 Inch
- Pressure Rating – Maximum .....0 to 300 psig (0 to 20.7 bar)
- Secondary Pressure Ranges –
  - Standard Pressure.....2 to 125 psig (0 to 8.6 bar)
  - Medium Pressure..... 1 to 60 psig (0 to 4.1 bar)
  - Medium Pressure..... 1 to 25 psig (0 to 2.1 bar)
- Temperature Ratings ..... 32°F to 125°F (0°C to 52°C)
- Weight .....0.5 lb. (0.23 kg)

**Materials of Construction**

- Adjusting Nut & Stem ..... Steel
- Body, Valve Poppet, Bottom Plug, Diaphragm Button ..... Brass
- Bonnet, Knob ..... Plastic
- Seals, Diaphragm ..... Buna N
- Springs ..... Steel



C	Product Selection
Filters	Coalescers
Regulators	Filter / Regulators
Lubricators	Compos
Accessories	

**⚠ WARNING**

To avoid unpredictable system behavior that can cause personal injury and property damage:

- Disconnect electrical supply (when necessary) before installation, servicing, or conversion.
- Disconnect air supply and depressurize all air lines connected to this product before installation, servicing, or conversion.
- Operate within the manufacturer's specified pressure, temperature, and other conditions listed in these instructions.
- Medium must be moisture-free if ambient temperature is below freezing.
- Service according to procedures listed in these instructions.
- Installation, service, and conversion of these products must be performed by knowledgeable personnel who understand how pneumatic products are to be applied.
- After installation, servicing, or conversion, air and electrical supplies (when necessary) should be connected and the product tested for proper function and leakage. If audible leakage is present, or the product does not operate properly, do not put into use.
- Warnings and specifications on the product should not be covered by paint, etc. If masking is not possible, contact your local representative for replacement labels.

**Introduction**

Follow these instructions when installing, operating, or servicing the product.

**Application Limits**

These products are intended for use in general purpose compressed air systems only.

**⚠ WARNING**

**Product rupture can cause serious injury.**  
**Do not connect regulator to bottled gas.**  
**Do not exceed maximum primary pressure rating.**

	kPa	PSIG	bar
Operating Pressure Maximum	1700	250	17.0
Operating Temperature Range:	-23°C to 52°C (-10°F to 125°F)		

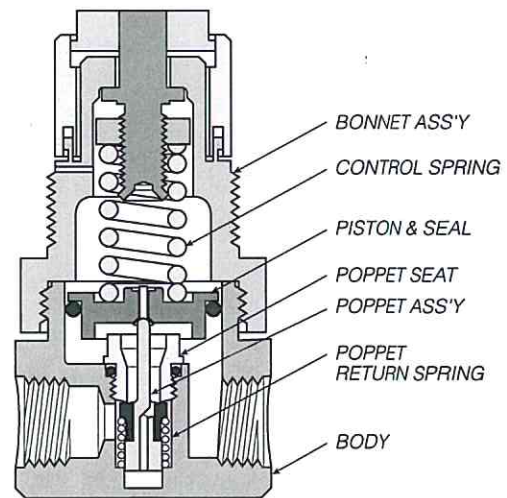
**Installation**

1. Install REGULATOR so that fluid flow is in direction of arrow. Installation must be upstream from devices it is to service (lubricator, valve, cylinder, or tool), and mounted closely to the other devices. Mounting may be in any position.
2. Gauge ports are located on both sides of the REGULATOR body for your convenience. It is necessary to install a gauge or socket pipe plugs into each port during installation. (Note: Miniature units use 1/8 NPT, and Economy units use 1/2 NPT).
3. For protection against rust, pipe scale, and other foreign matter, install a FILTER on the upstream (high pressure) sides as close to the REGULATOR as possible.

**Operation & Service**

1. BEFORE INSTALLING OR DISASSEMBLING REGULATOR FOR SERVICING, SHUT OFF FLUID SUPPLY PRESSURE TO REGULATOR.

2. To service the Regulator, disengage the yellow lock sleeve by pulling upward. Turn adjusting knob counterclockwise until compression is released from the pressure control spring. Remove bonnet assembly to service the piston area, the poppet assembly area, or both.
3. After servicing the Regulator, or upon installing the Regulator, turn on air supply. Then proceed to adjust the desired downstream pressure by turning adjusting knob clockwise. This permits pressure to build up slowly, preventing any unexpected operation of valve, cylinders, tools, etc. in the downstream line.
4. To decrease regulated pressure settings, always reset from a pressure lower than the final setting required. Example, lowering the secondary pressure from 80 PSI to 60 PSI is best accomplished by dropping the secondary pressure to 50 PSI, then adjusting upward to 60 PSI.
5. When desired, secondary pressure settings can be reached by pushing the yellow locking sleeve down to lock the adjusting knob.



20R

**⚠ WARNING**

**FAILURE OR IMPROPER SELECTION OR IMPROPER USE OF THE PRODUCTS AND/OR SYSTEMS DESCRIBED HEREIN OR RELATED ITEMS CAN CAUSE DEATH, PERSONAL INJURY AND PROPERTY DAMAGE.**

This document and other information from The Company, its subsidiaries and authorized distributors provide product and/or system options for further investigation by users having technical expertise. It is important that you analyze all aspects of your application, including consequences of any failure and review the information concerning the product or systems in the current product catalog. Due to the variety of operating conditions and applications for these products or systems, the user, through its own analysis and testing, is solely responsible for making the final selection of the products and systems and assuring that all performance, safety and warning requirements of the application are met.

The products described herein, including without limitation, product features, specifications, designs, availability and pricing, are subject to change by The Company and its subsidiaries at any time without notice.

**EXTRA COPIES OF THESE INSTRUCTIONS ARE AVAILABLE FOR INCLUSION IN EQUIPMENT / MAINTENANCE MANUALS THAT UTILIZE THESE PRODUCTS. CONTACT YOUR LOCAL REPRESENTATIVE.**